

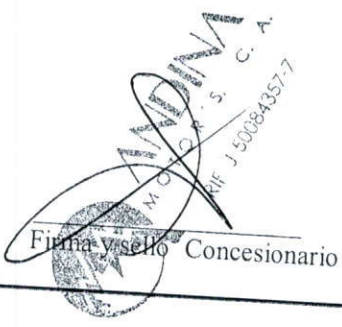
REVISIÓN PERIÓDICA DE MANTENIMIENTO
CUPÓN 11
REVISION 50.000 KM.

CON CARGO AL CLIENTE

KILOMETRAJE: 49.240

2207
Orden de reparación

03.11.13
Fecha


Firma y sello Concesionario

REVISIÓN PERIÓDICA DE MANTENIMIENTO
CUPÓN 12
REVISION 55.000 KM.

CON CARGO AL CLIENTE

KILOMETRAJE:

Orden de reparación

Fecha

Firma y sello Concesionario

ARNOLDO ROMERO													
Descripción	Kilometros												
Plan de mantenimiento a realizar	1.000	5.000	10.000	15.000	20.000	25.000	30.000	35.000	40.000	45.000	50.000	55.000	60.000
Kms del mantenimiento ejecutado por el cliente	3.077	5.931	11.722	15.909	22.560	28.880	X	34.469	41.508	X	49.240	X	PROCESO

MEDIDA DE PISTONES

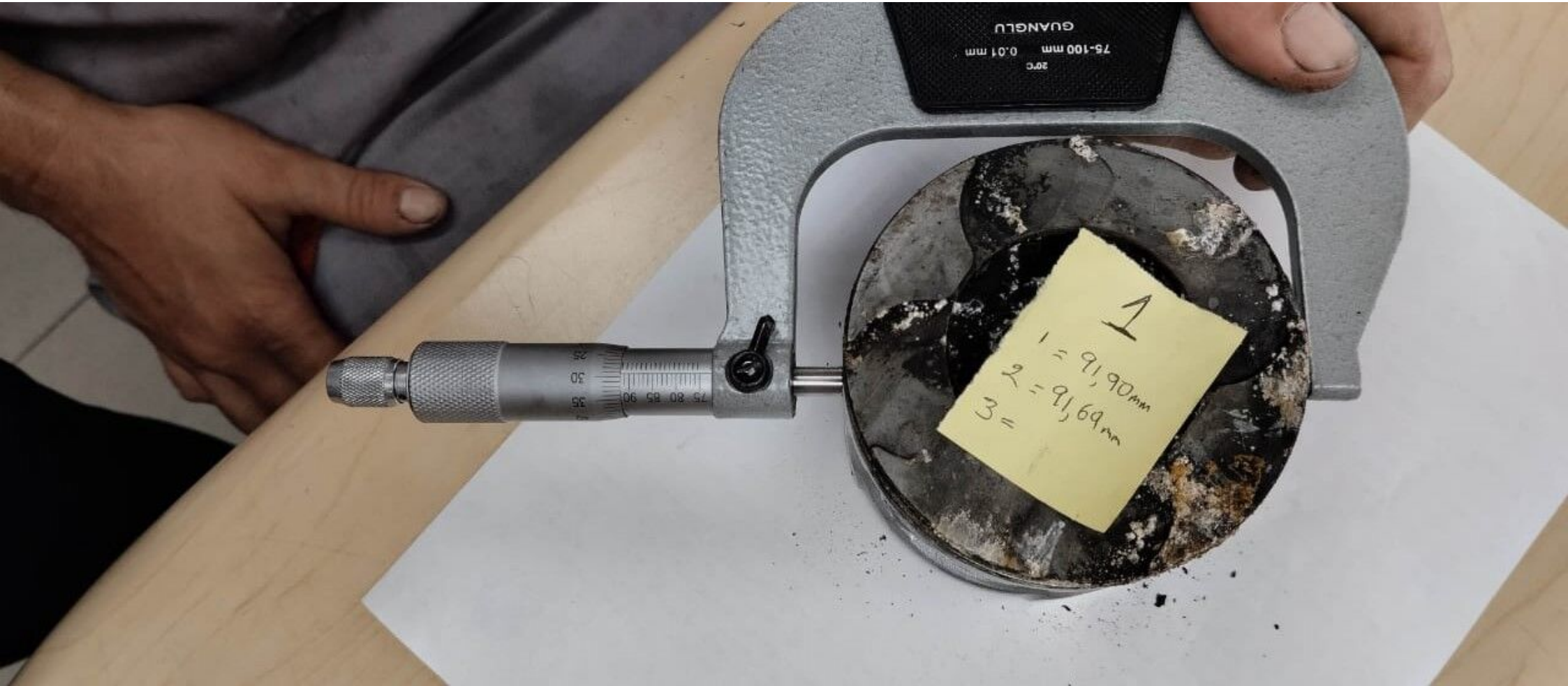
	1	2	3	TOTAL	PROM
PISTON 1	91,900	91,690	91,790	275,380	91,793
PISTON 2	91,700	91,680	91,730	275,110	91,703
PISTON 3	91,720	92,200	91,700	275,620	91,873
PISTON 4	91,720	91,470	91,530	274,720	91,573



20°C
75-100 mm 0.01 mm
GUANGLU

2
1 =
2 =
3 =

15
20
25
30
35
40
45
50
55
60
65
70
75
80
85
90
95



GUANGLU
75-100 mm 0.01 mm
20°C

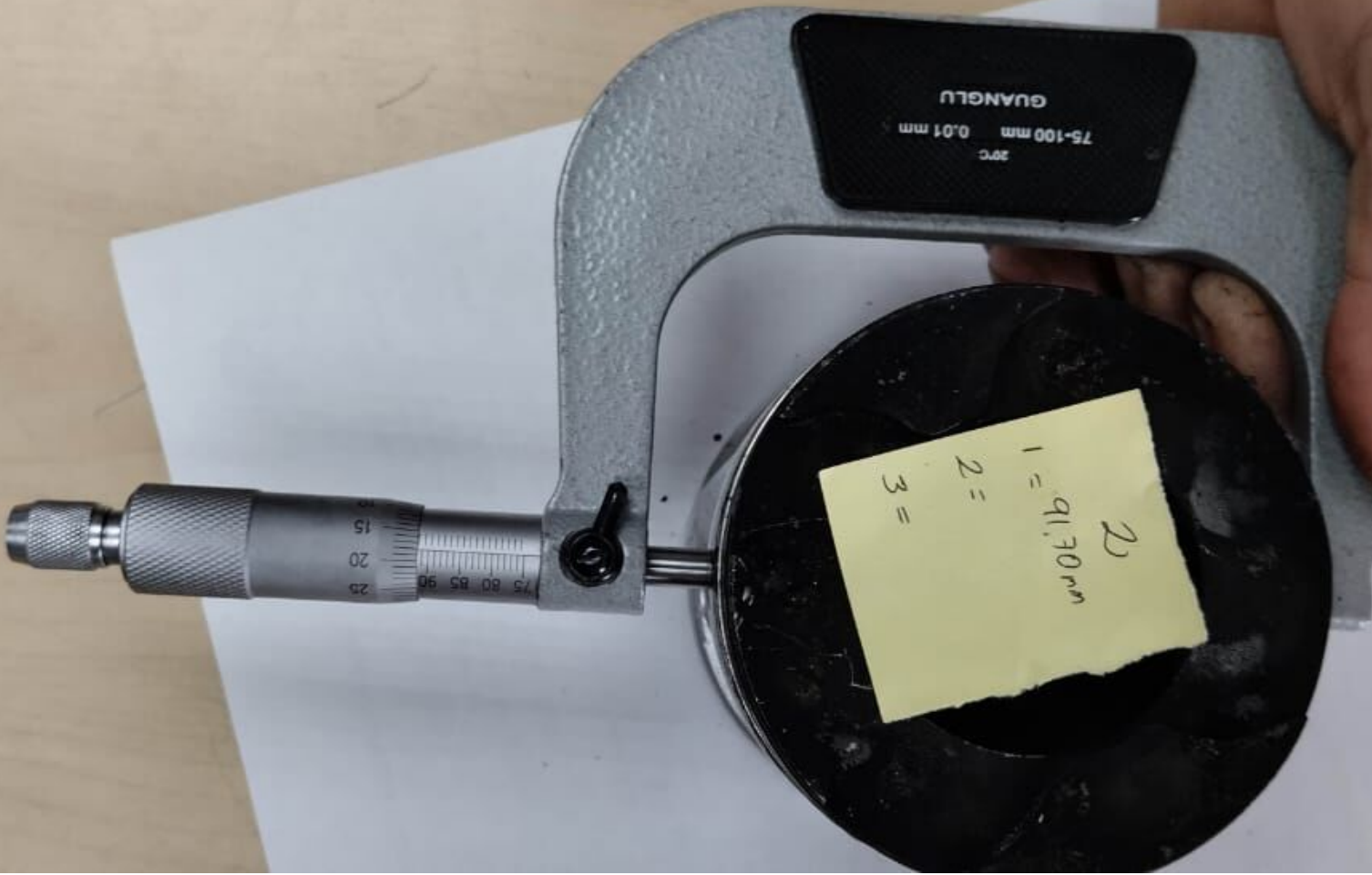
1

1 = 91,90 mm

2 = 91,69 mm

3 =

75 80 85 90



GUANGLU
75-100 mm 0.01 mm
20°C

2
1 = 91.70 mm
2 =
3 =

75 80 85 90
15 20 25



1
1 = 91,90mm
2 =
3 =

20°C
75-100 mm 0.01 mm
GUANGLU

75 80 85 90
25
20
15



20°C
75-100 mm 0.01 mm

GUANGLU

1 =
2 =
3 =

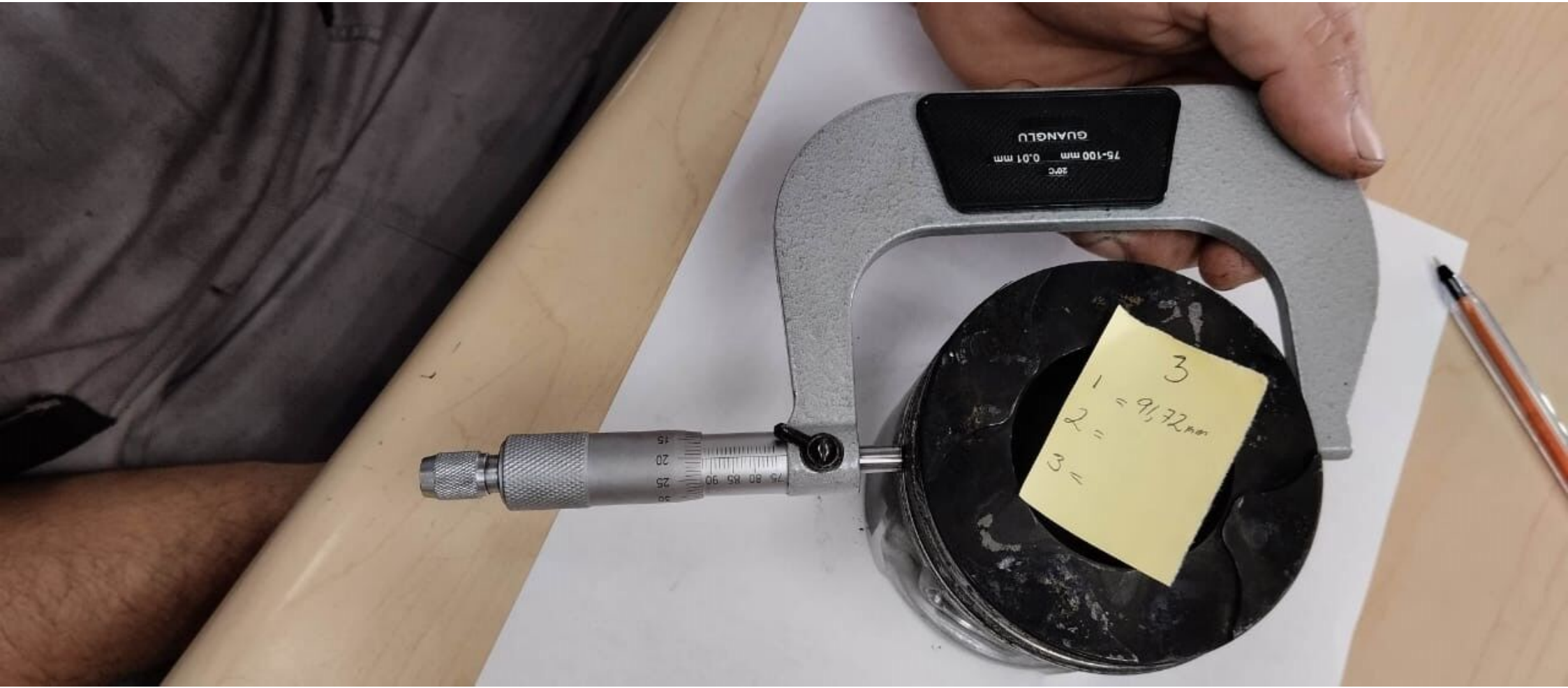


20°C
75-100 mm 0.01 mm

GUANGLU

75 80 85 90

30
25
20
15



GUANGLU
75-100 mm 0.01 mm
20°C

3
1 = 9,72 mm
2 =
3 =

15
20
25
30
75 80 85 90



3
1 = 91,72 mm
2 = 92,20 mm
3 =

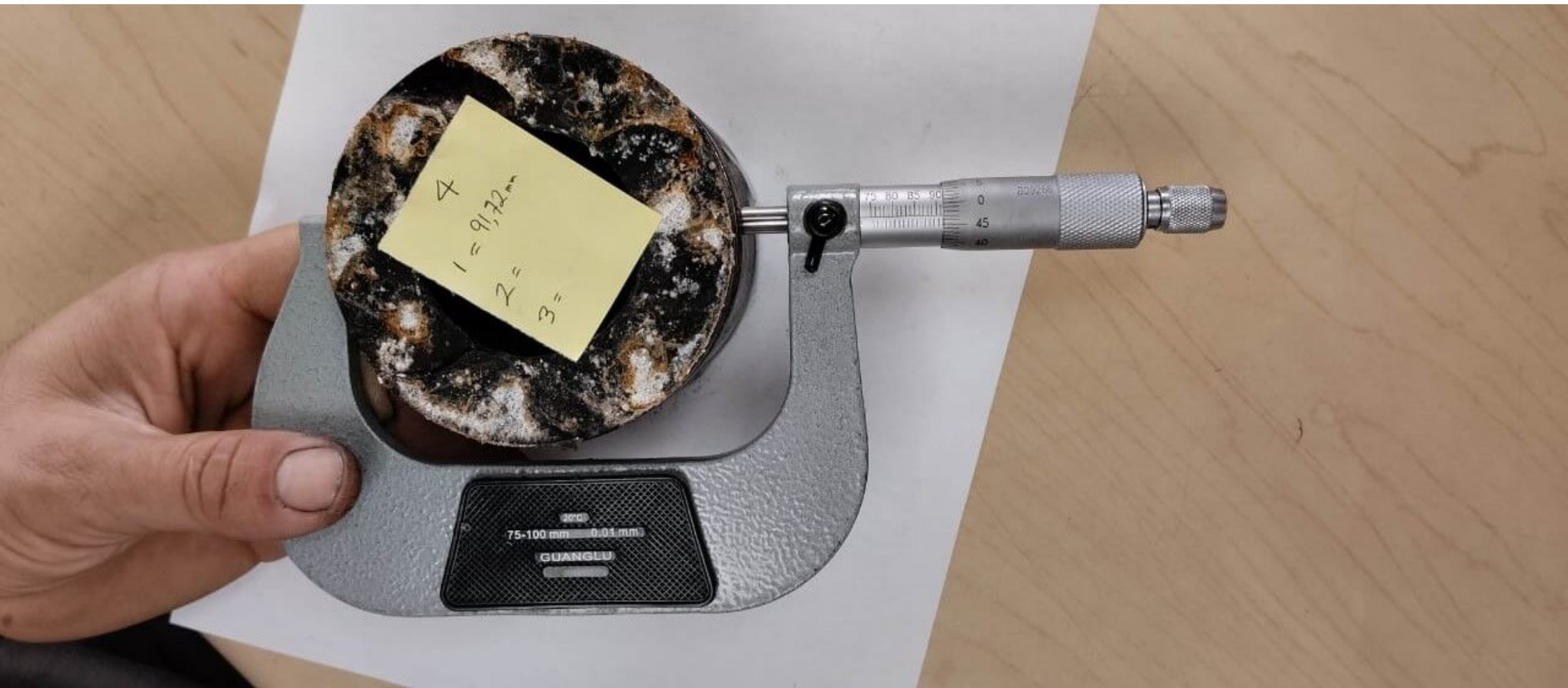


3
1 =
2 =
3 =

20°C
75-100 mm 0.01 mm
GUANGLU

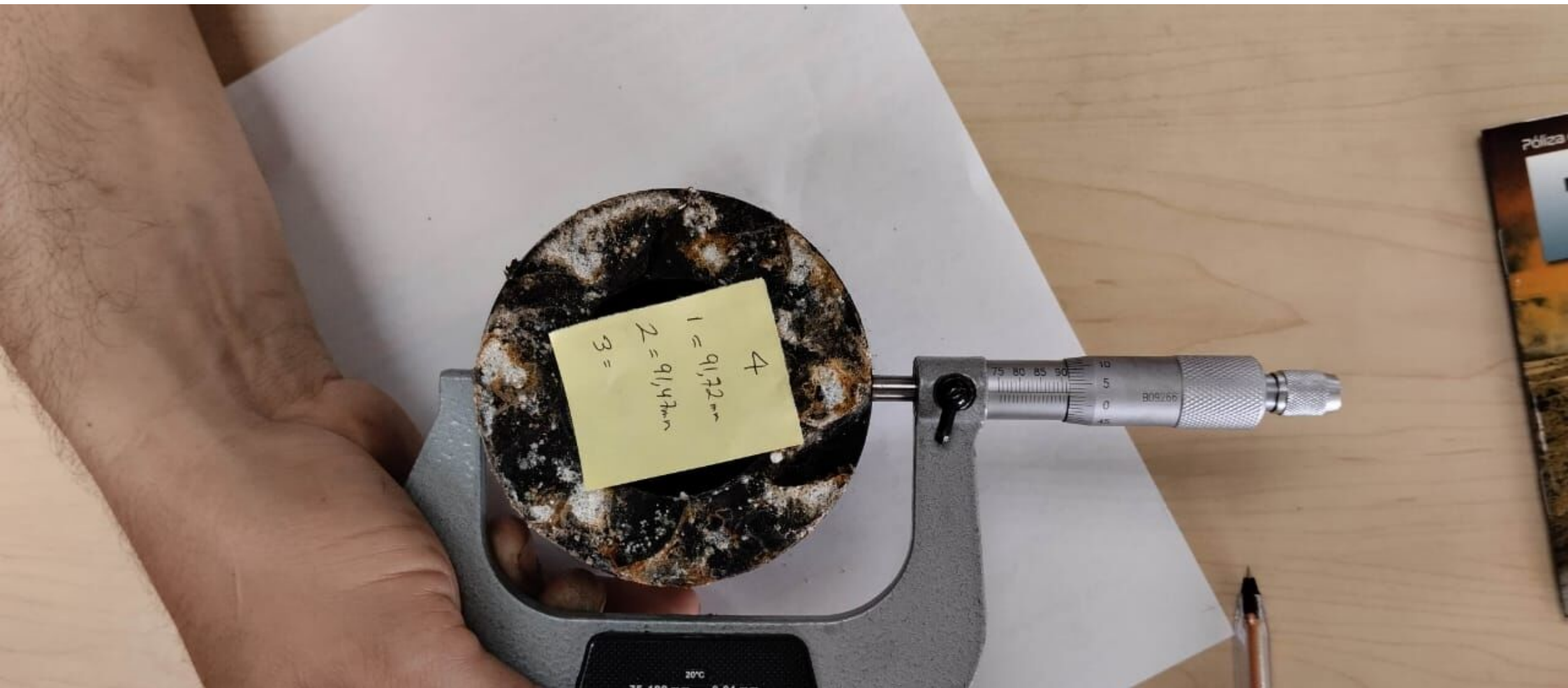
75 80 85 90

20 25 30



4
1 = 9,72 mm
2 =
3 =

300
75-100 mm 0.01 mm
GUANGU



4
1 = 91,72 mm
2 = 91,47 mm
3 =

75 80 85 90
10
5
0
45
B09266

20°C

2
1 = 91,70 mm
2 = 91,68 mm
3 = 91,73 mm
 $\overline{T} \Rightarrow 91,70333''$

1
1 = 91,90 mm
2 = 91,69 mm
3 = 91,79 mm
 $\overline{T} \Rightarrow 91,7933''$

4
1 = 91,72 mm
2 = 91,47 mm
3 = 91,53 mm
 $\overline{T} \Rightarrow 91,573''$

3
1 = 91,72 mm
2 = 92,20 mm
3 = 91,70 mm
 $\overline{T} \Rightarrow 91,8733''$



1 =
2 =
3 =
4

30°C
75-100 mm 0.01 mm
GUANGLU