

**MEDIDA DE PISTONES**

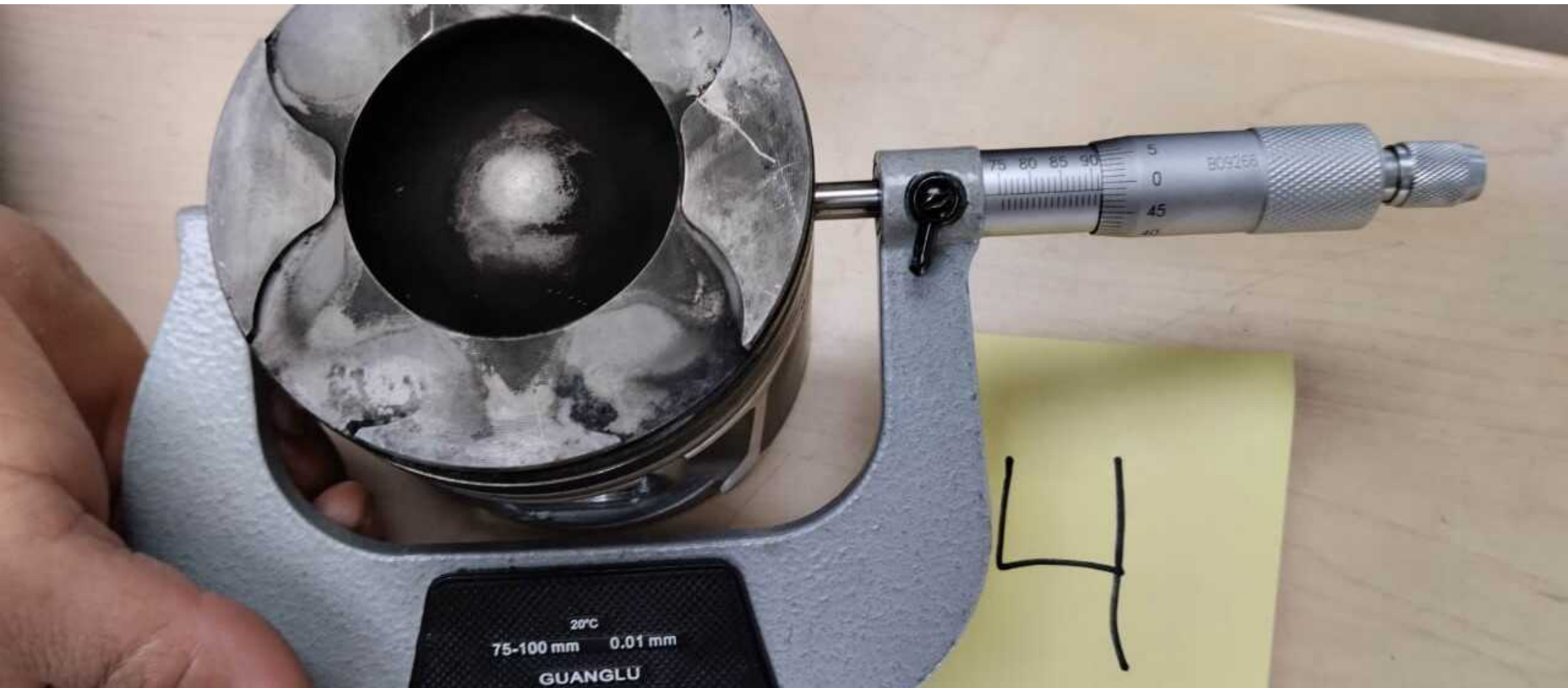
	1	2	3	TOTAL	PROM
PISTON 1	91,510	91,050	91,510	274,070	91,357
PISTON 2	91,510	91,990	91,540	275,040	91,680
PISTON 3	91,510	91,630	91,500	274,640	91,547
PISTON 4	91,940	91,530	91,500	274,970	91,657



20°C  
75-100 mm 0.01 mm  
GUANGLU

4





20°C  
75-100 mm 0.01 mm  
GUANGLU

44







20°C  
75-100 mm 0.01 mm  
GUANGLU

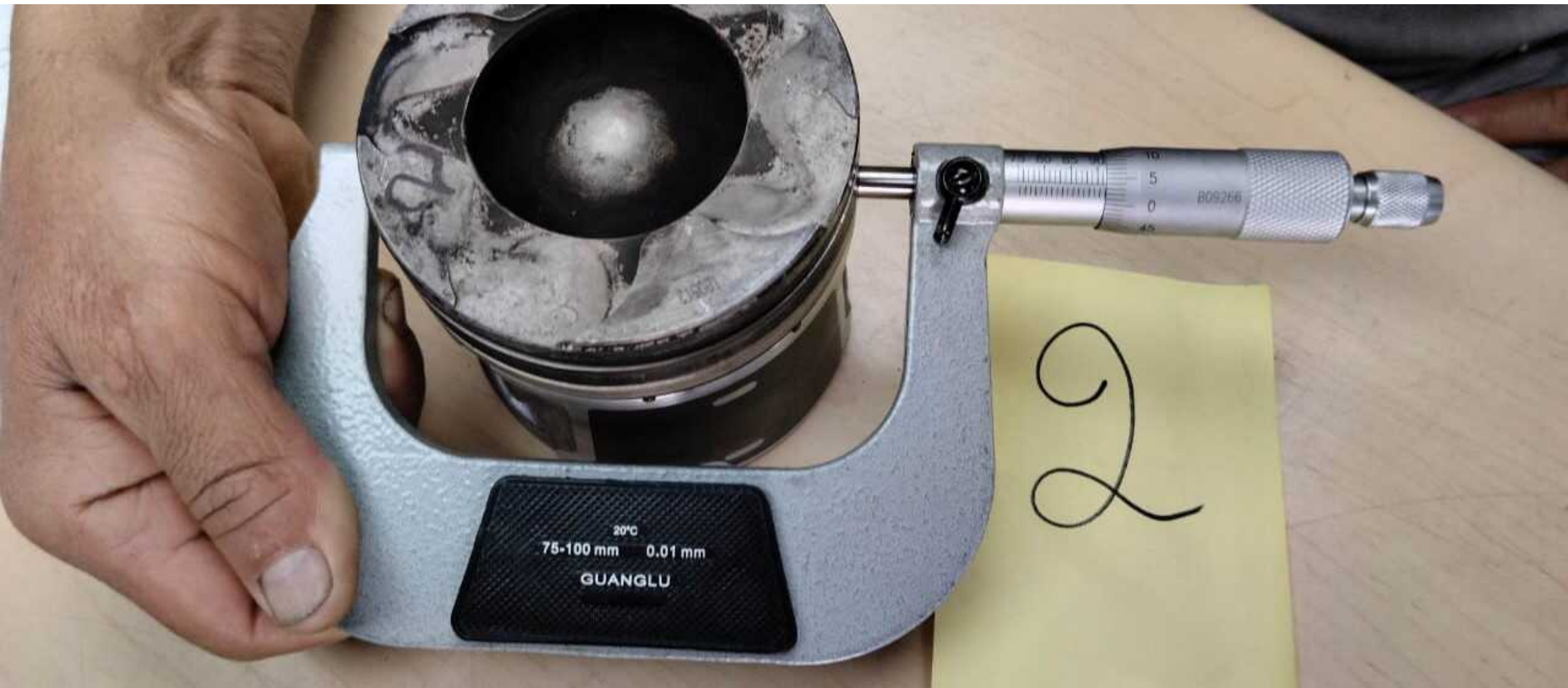
3



1'b  
00  
0

3





20°C  
75-100 mm 0.01 mm  
GUANGLU

2





20°C  
75-100 mm 0.01 mm

GUANGLU

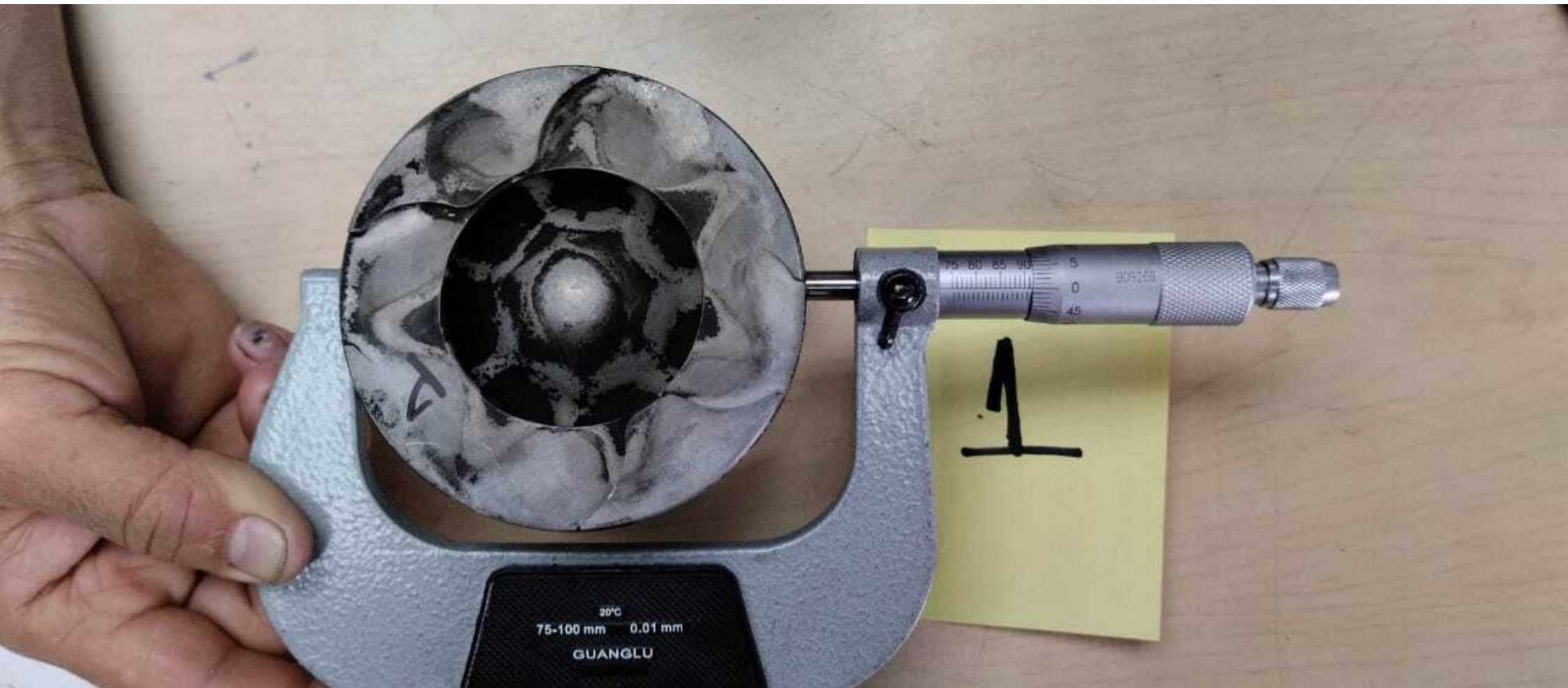
3



30°C  
75-100 mm 0.01 mm  
GUANGLU

1





20°C  
75-100 mm 0.01 mm  
GUANGLU

1





20°C  
75-100 mm 0.01 mm

GUANGLU

2

